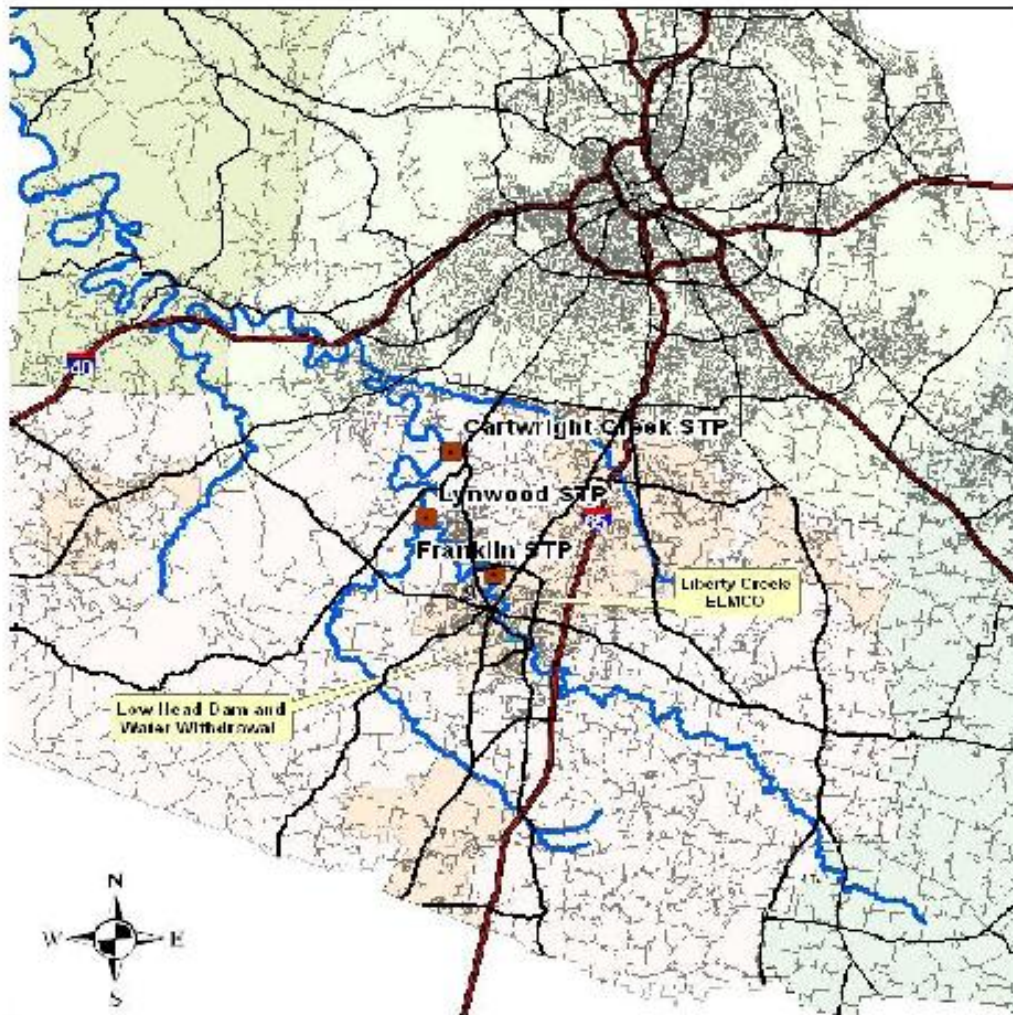




HARPETH RIVER
WATERSHED ASSOCIATION

Dissolved Oxygen Study Charts
2006, 2007, 2008



This map created for Harpeth River Watershed Association by M. Cain using GIS software and data from bgs.org and data gathered by HRWA staff.

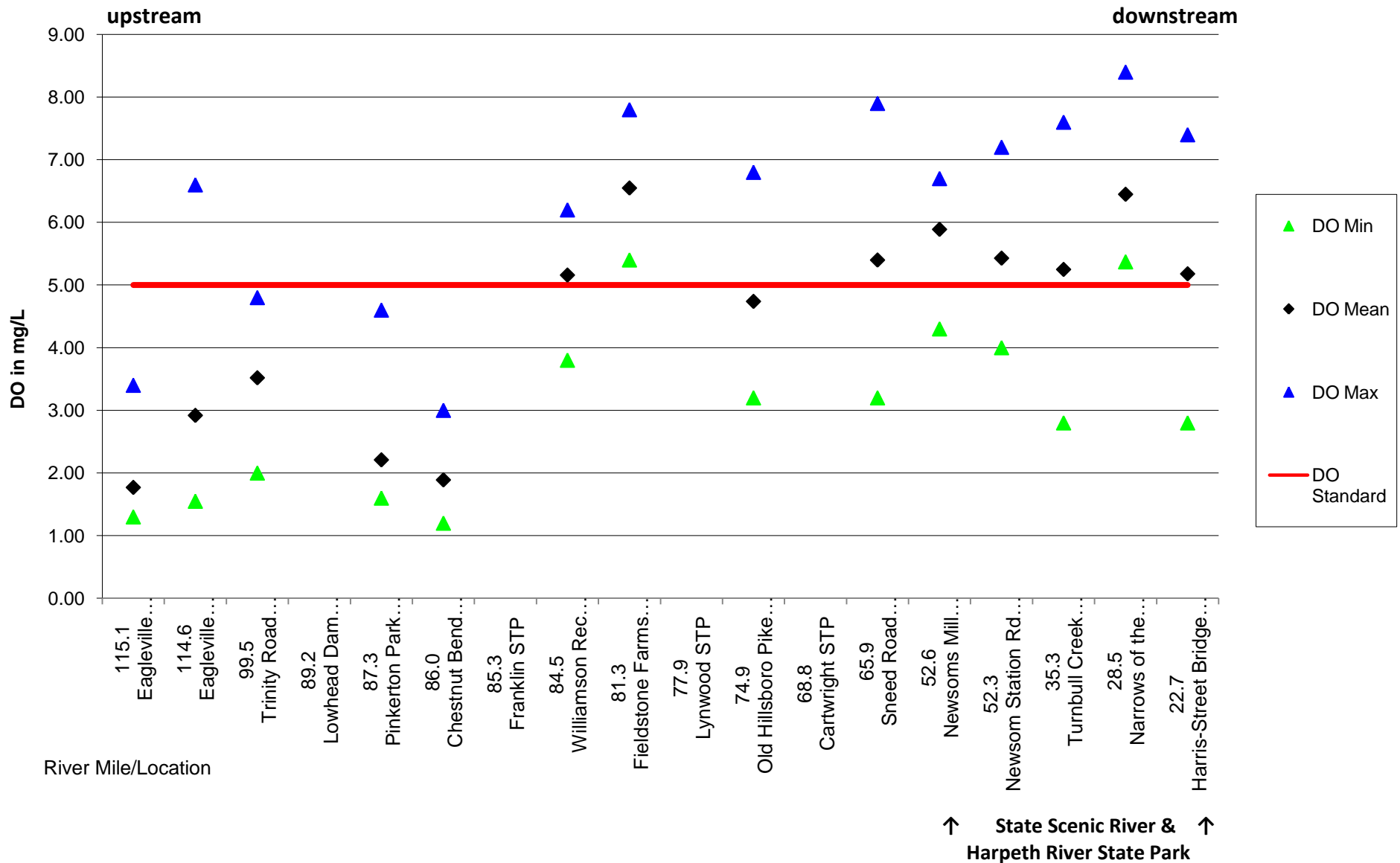
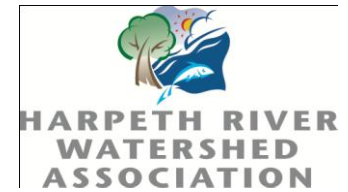
1 2 3 4 5 6 7 8 9 10
Miles

Studies by HRWA, including these charts are available at www.harpethriver.org/library

P.O. Box 1127 ■ Franklin, Tennessee 37065 ■ Phone: 615-790-9767 ■ Facsimile: 615-760-9767 ■ www.harpethriver.org
© 2007 HRWA. All rights reserved. All other trademarks are the property of their respective owners.

September 2006 Harpeth River Dissolved Oxygen Study

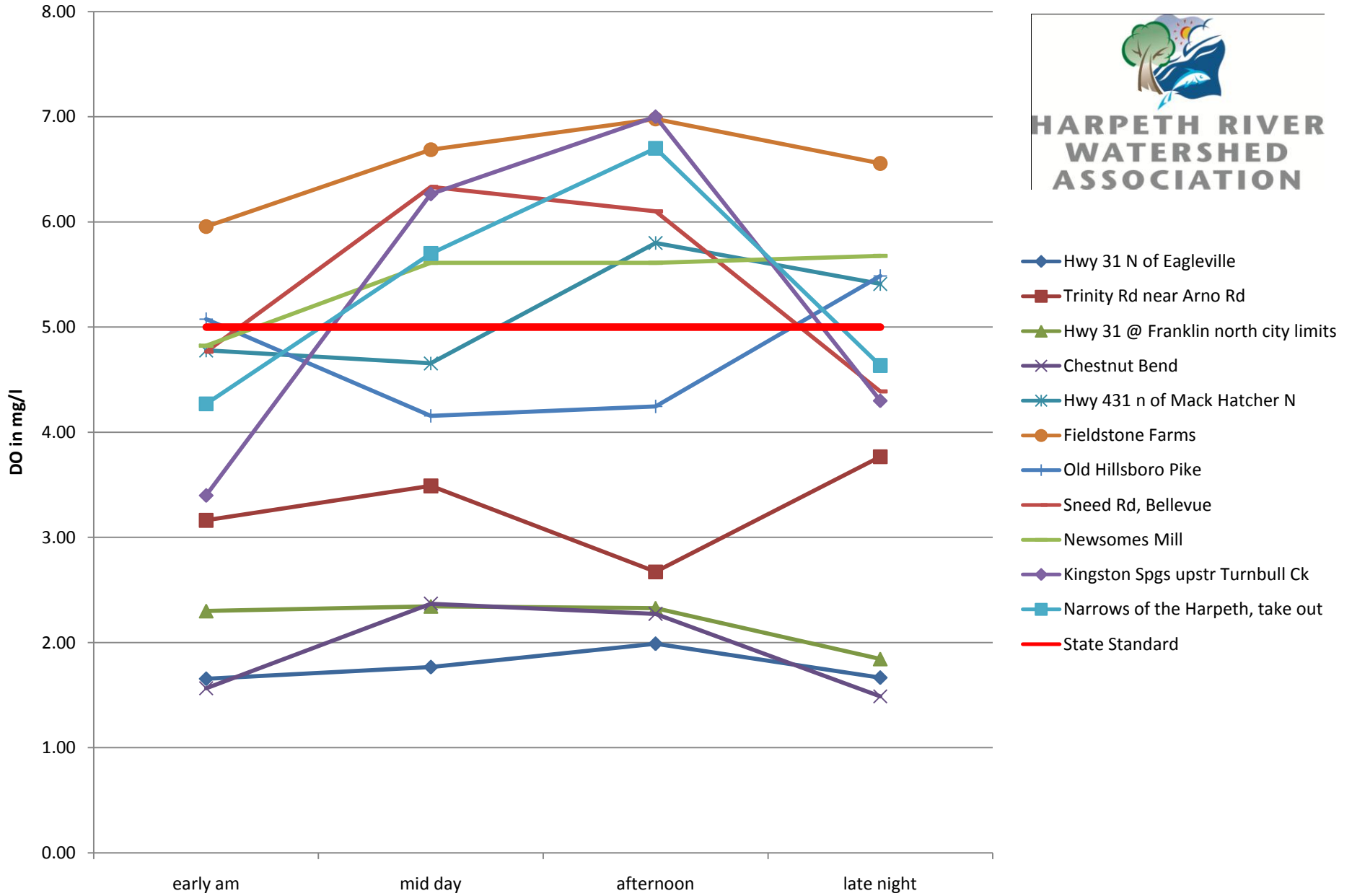
min - average - max in mg/liter



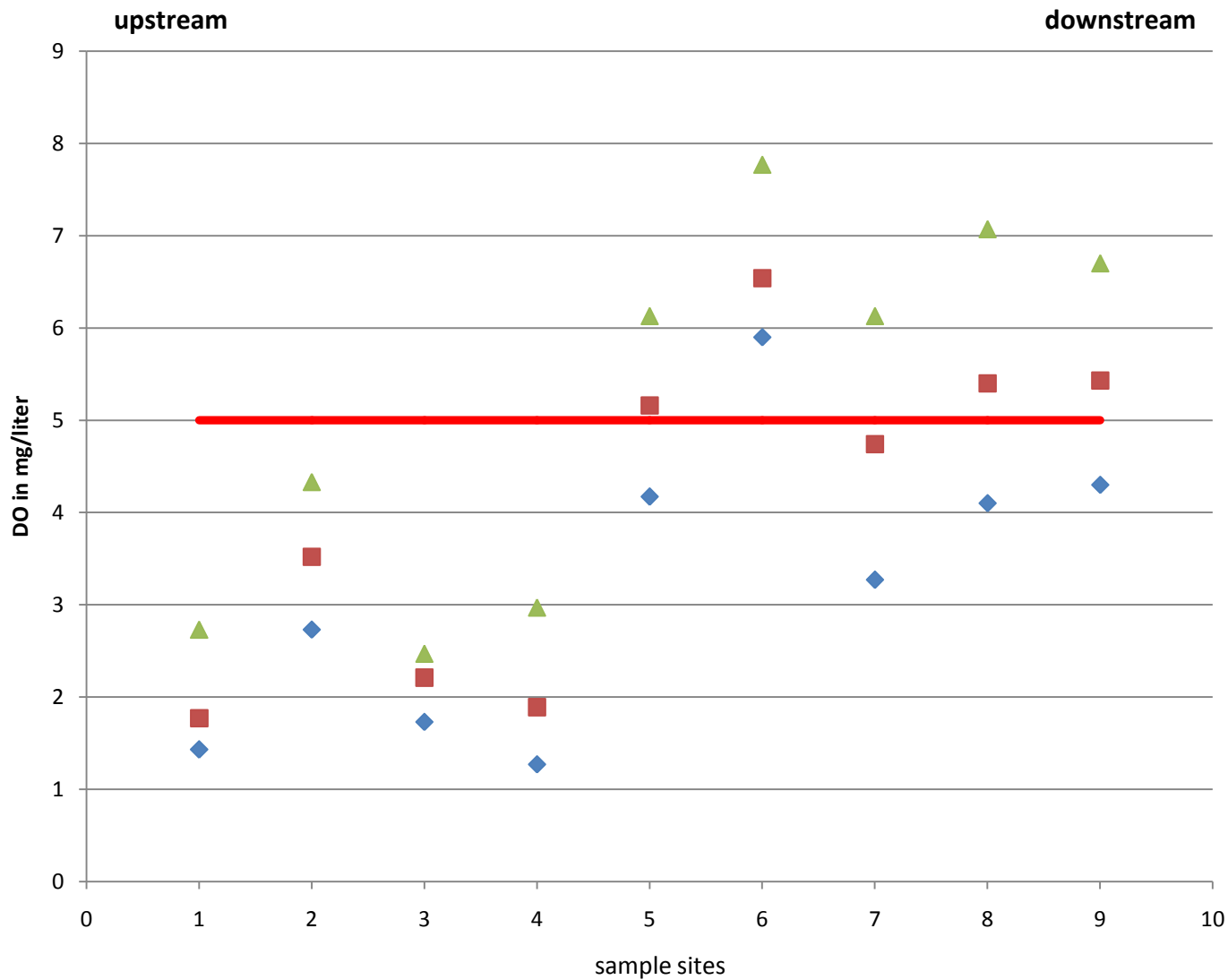
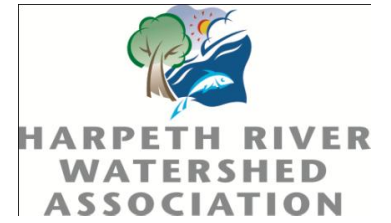
September 2006 Harpeth River Disolved Oxygen Study



**HARPETH RIVER
WATERSHED
ASSOCIATION**



June-July 2007 Harpeth River Dissolved Oxygen Study



◆ min

■ av

▲ max

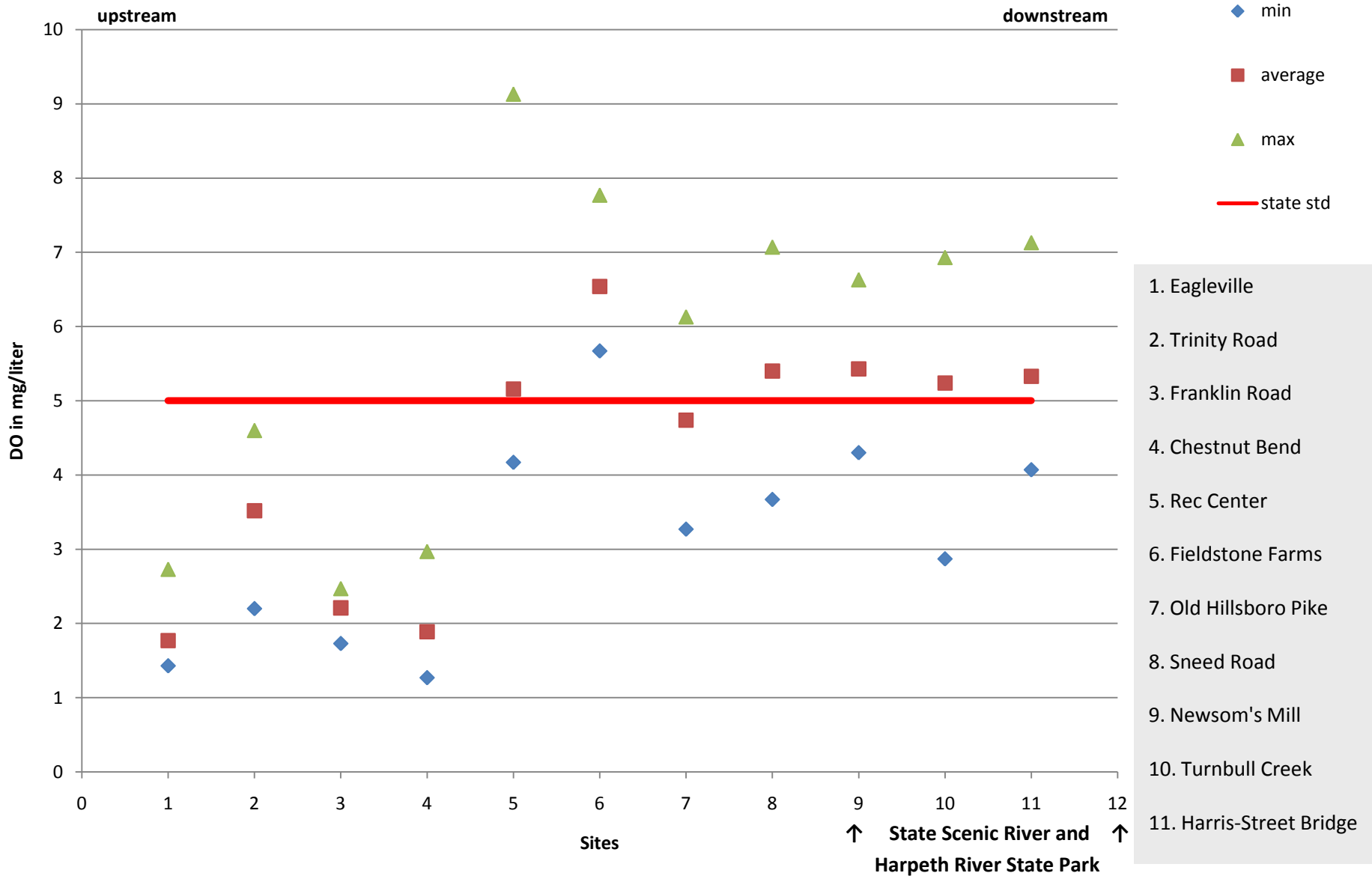
— Std

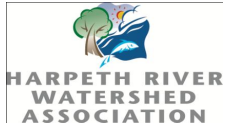
1. in impoundment
2. below lowhead dam
3. Pinkerton Park.
4. Danials Drive
5. Franklin Road
6. 4th Av at Hillsboro
7. Chestnut Bend
8. Rec Center
9. Fieldstone Farms



HARPETH RIVER
WATERSHED
ASSOCIATION

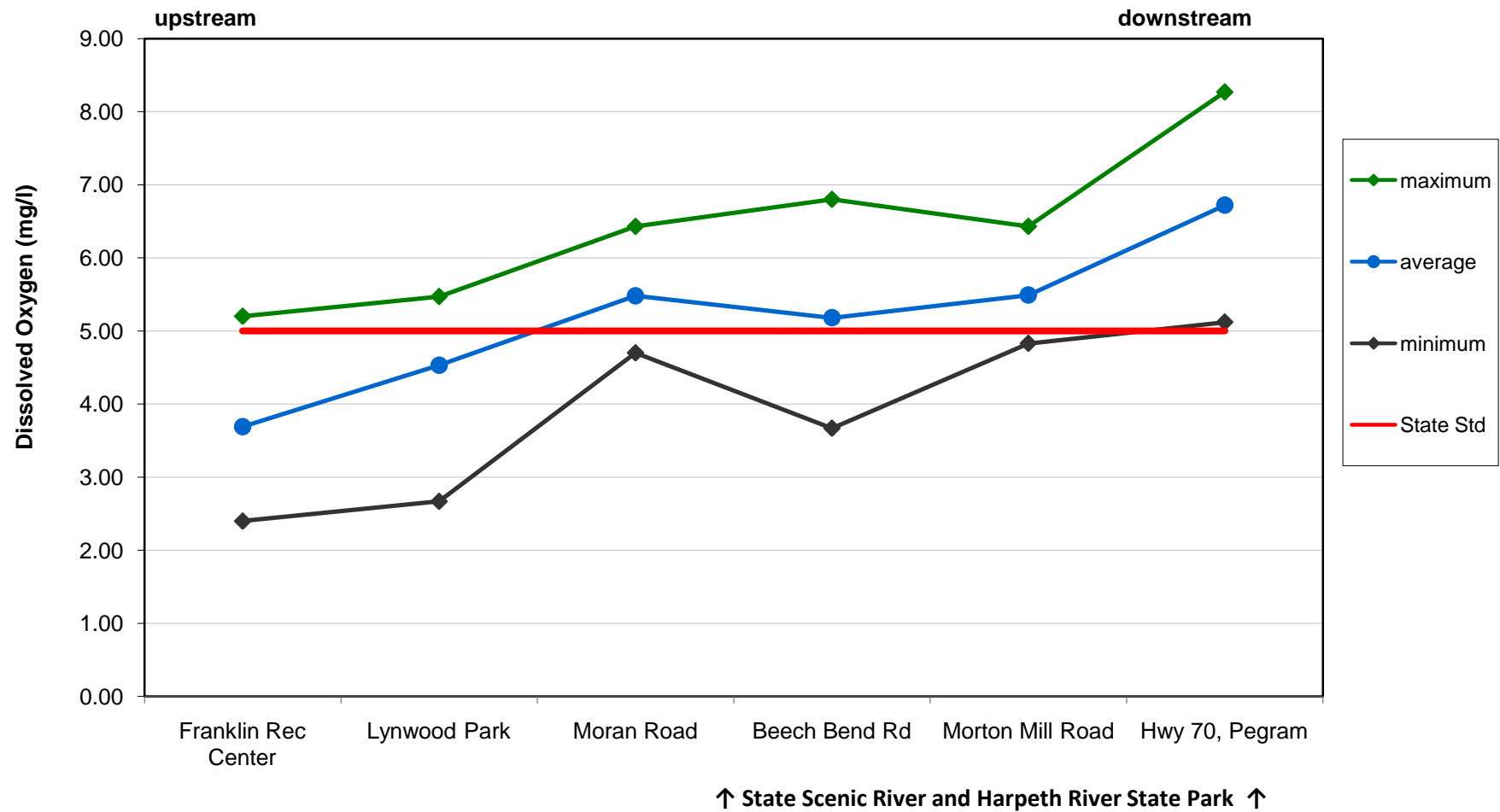
September 2007 Harpeth River Dissolved Oxygen Study



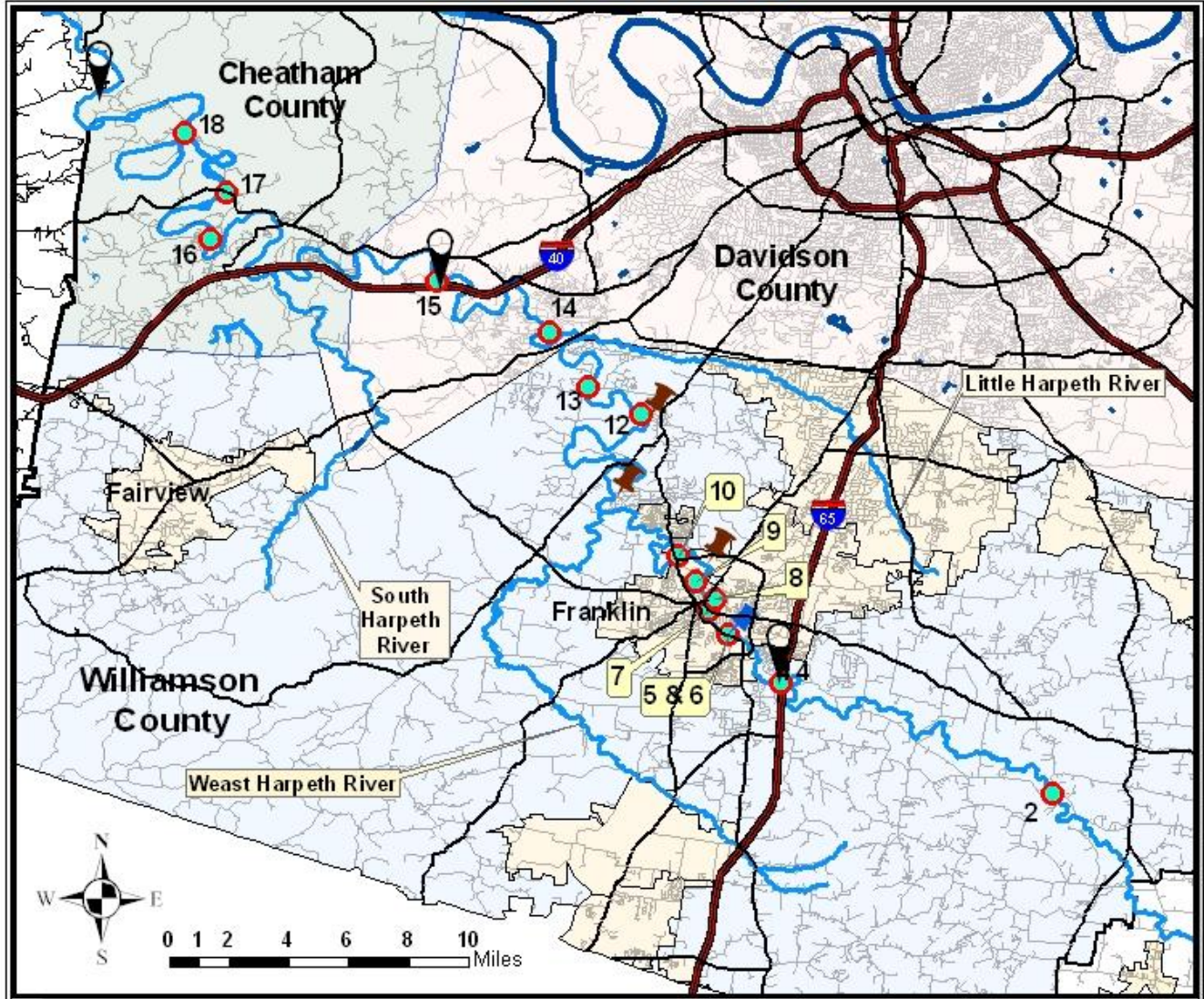


2008 Harpeth River Dissolved Oxygen Study










min - average - max in mg/liter



Harpeth River Watershed Association Fall 2007 Dissolved Oxygen Study Site Map Overview Map



Legend

	TDEC 2007 DO Sites		HRWA DO Sites 9-07		Harpeth River
	Franklin WTP Intake		Cumberland River		Urban Areas
	STP's in Harpeth watershed		Interstate		Roads

This map was created for HRWA by Michael Cain using ESRI software and data from tngis.org and from data generated by HRWA & TDEC staff