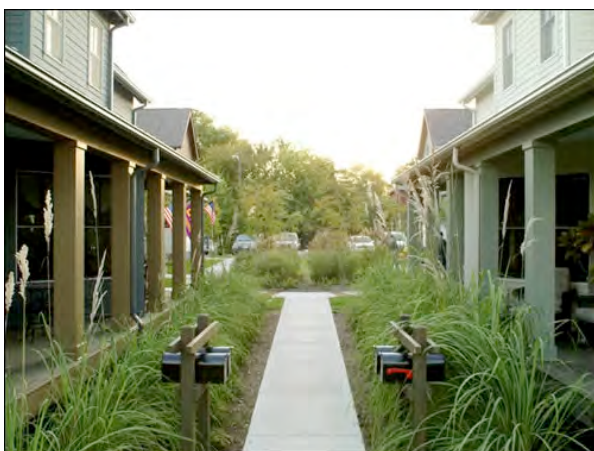
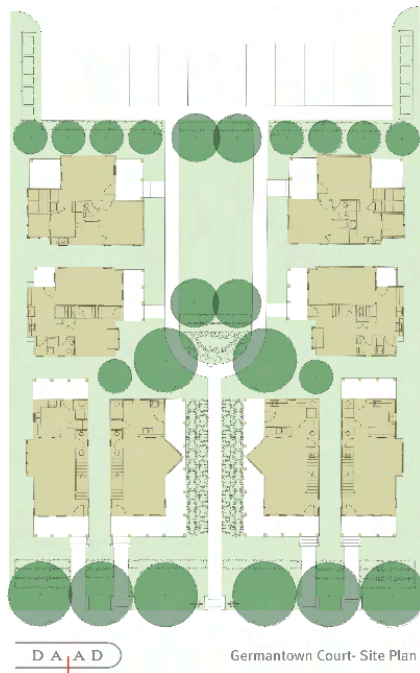


# NASHVILLE CIVIC DESIGN CENTER

## Case Study: Court-Yard Housing

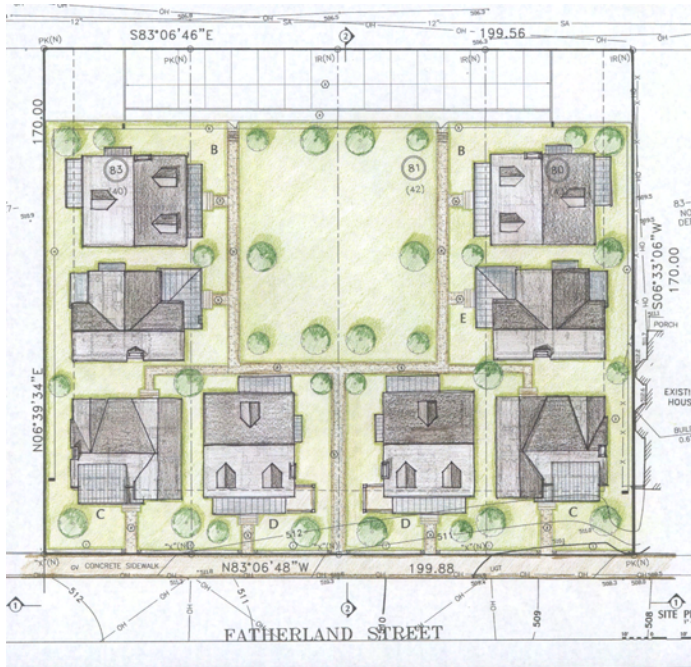
### **Germantown Court**

Year Completed: 2003  
Developer: Germantown Partners, LLC  
Architect: Dryden Abernathy | Architecture Design, LLC  
Land Area: .5 acre  
Number of Units: 8  
Units per Acre: 16 per acre  
Neighborhood: Germantown  
Green Features: Crushed limestone for parking and rainwater diversion into barrels for irrigation



## Fatherland Court

Year Completed: 2006  
Cost: \$1,029,268 (not including land, interest expense or architectural cost)  
Developer: Martin Corner LLC  
Architect: Street Dixon Rick Architecture, PLC  
Richard McCoy, AIA, LEED-AP  
Land Area: .64 acres  
Number of Units: 8 freestanding dwellings ranging from 1600 - 1700 sqft  
Units per Acre: 12 units per acre  
Neighborhood: East Nashville  
Green Features: Retention area & rain garden in the common area for storm water control, use of local materials



## West End Station

Year Completed: 2010  
Cost: \$12 million  
Developer: Core Development  
Architect: Dryden Abernathy | Architecture Design, LLC  
Land Area: 5 acres  
Number of Units: 46  
Units per Acre: 9 houses per acre  
Neighborhood: Sylvan Park  
Green features: Low-E windows, R30 wall and attic insulation using blown cellulose, radiant barrier roofs, dual flush toilets, compact fluorescent light fixtures, low maintenance exteriors, recycled content porch materials

