

Daily Downloads
 Sandra Dorman
 Barry Klipsch

Eastern and Pennsylvania Benefit Integrity
 Support Centers

Confidentiality Statement – This presentation includes data that shall not be duplicated, used, or disclosed—in whole or in part—for any purpose outside the audience to whom it is being presented. This restriction does not limit the recipients right to use information contained in the data if it is obtained from another source without restriction. All data in this presentation are subject to this restriction.


**SafeGuard
 Services
 LLC**

/// 1 / October 2009 / SGS INTERNAL

Introduction

What are they?

- Extracts
 - Directly from MAC
 - Before they are processed
 - Part B
- Fields
 - Header Fields
 - Seven Fields
- Early Detection for Fraud



Use or disclosure of the data contained in this sheet is subject to the restrictions on the title page of this presentation.

Daily Download /// 3 / OCTOBER 2009 / SGS INTERNAL

**SafeGuard
 Services
 LLC**

What Do We Do With Them?

- SAS Enterprise Guide
- Processed Weekly
- Developed Algorithms
 - Analysis of submissions by processing cycle
 - » Claims per Beneficiary per Cycle
 - » Total Submitted Dollars Per Cycle
 - » Ratio of Mean Claims per Beneficiary to Mean FDOS per Beneficiary



Use or disclosure of the data contained in this sheet is subject to the restrictions on the title page of this presentation.

Daily Download

/// 4 / OCTOBER 2009 / SGS INTERNAL



What Do We Do With Them?

- Compromised beneficiaries
- Tracking over-utilized beneficiaries
- New provider analysis
- Claim Dumping
- Incremental Quantile Estimation
- Static Utilization

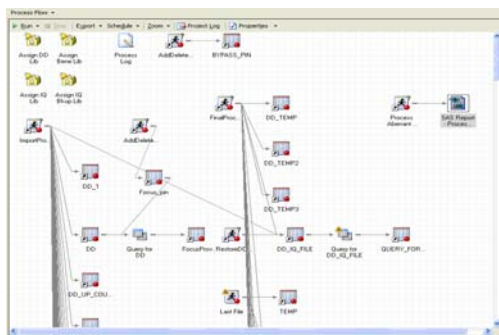
Use or disclosure of the data contained in this sheet is subject to the restrictions on the title page of this presentation.

Daily Download

/// 5 / OCTOBER 2009 / SGS INTERNAL



SAS Enterprise Guide



Use or disclosure of the data contained in this sheet is subject to the restrictions on the title page of this presentation.

Daily Download

/// 6 / OCTOBER 2009 / SGS INTERNAL



SAS Enterprise Guide

Listing of Aberrant Providers

Provider PIN	Last Name Group Name	First Name	Specialty	Model Abuse	MCS Update Date	MCS Effective Date
	Group Provider22			IG Only	09/22/2009	05/24/2009
	Group Provider30			IG Only	09/22/2009	05/01/2003
	Group Provider70			IG Only	08/04/2009	01/08/2009
	Group Provider70			IG Only	11/26/2008	06/01/1994

Potential Claim Dumping Aberrancy Report MD - 08/06/2009

Process Date	AB Aberrancy Type	AB Type	AB PIN	First Report Date	Most Recent Aberrancy Indicator	Claim Per Beneficiary Indicator	Change Rate Indicator	Prevalence Ratio Indicator	Prevalence Total Report Date	Prevalence Control By Report Date	Current Control Total Report Date	Control of Prevalence By Report Date	Control Total Report Date	Control of Prevalence By Report Date	Percent of Total Cases	Percent of Total Cases
08/06/2009 13:28:11	18500	Only	07/07/2009/01/0000	2	0	0	0	0	0	0	0	0	0	0	0	0

- Pulls in Provider Information
- Aberrancy Indicators

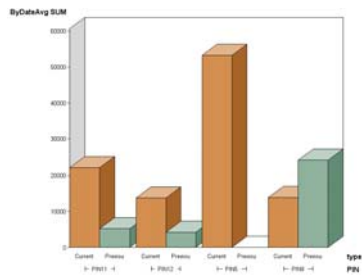
Use or disclosure of the data contained in this sheet is subject to the restrictions on the title page of this presentation.

Daily Download

/// 10 / OCTOBER 2009 / SGS INTERNAL



SAS Enterprise Guide



- Claims Dumping
 - Current
 - Previous

Use or disclosure of the data contained in this sheet is subject to the restrictions on the title page of this presentation.

Daily Download

/// 11 / OCTOBER 2009 / SGS INTERNAL



SAS Enterprise Guide

Provider - Compromised Benes MD - Number of Benes

The FREQ Procedure

N	PIN	Frequency	Percent	Cumulative Frequency	Cumulative Percent
8	ALERT: -	8	72.73	8	72.73
1		1	9.09	9	81.82
1		1	9.09	10	90.91
1		1	9.09	11	100.00

- Alert
- Number of compromised beneficiaries

Use or disclosure of the data contained in this sheet is subject to the restrictions on the title page of this presentation.

Daily Download

/// 12 / OCTOBER 2009 / SGS INTERNAL



Case 1 – Identity Theft

- Identified
 - Billing for Compromised Beneficiaries
 - California
 - Ohio
 - New York
- Provider
 - MCS
 - Only Member
 - Number active for 2 months
 - \$500,000 paid with \$225,000 pending
 - Specialty
 - Services Billed



Use or disclosure of the data contained in this sheet is subject to the restrictions on the title page of this presentation.

Daily Download

/// 16 / OCTOBER 2009 / SGS INTERNAL

**SafeGuard
Services
LLC**

Case 1 – Identity Theft

- Provider
 - Internet
 - Address
 - Provider
 - Phone Call
 - Drive-by
- Beneficiary Interviews
 - Not in New York
 - Did not know the Physician
- Immediate Referral
 - Phone call from FBI



Use or disclosure of the data contained in this sheet is subject to the restrictions on the title page of this presentation.

Daily Download

/// 17 / OCTOBER 2009 / SGS INTERNAL

**SafeGuard
Services
LLC**

Case 2 – Identity Theft

- Identified
 - Billing for Compromised Beneficiaries
 - » California
 - » Ohio
 - » New York
- Provider
 - MCS
 - Only Member
 - Number active for 2 months
 - \$190,000 pending



Use or disclosure of the data contained in this sheet is subject to the restrictions on the title page of this presentation.

Daily Download

/// 18 / OCTOBER 2009 / SGS INTERNAL

**SafeGuard
Services
LLC**

Case 2 – Identity Theft

- Provider
 - Specialty
 - Services Billed
 - Internet
 - Address
 - Another Provider
 - Drive-by
- Immediate Referral to OIG
 - Linking two cases



Use or disclosure of the data contained in this sheet is subject to the restrictions on the title page of this presentation.

Daily Download

/// 19 / OCTOBER 2009 / SGS INTERNAL

**SafeGuard
Services
LLC**

Case 3 - Fraud

- Identified
 - Billing for Over-utilized Beneficiaries
- Provider
 - Other Members
 - Other Numbers
 - Chiropractor
 - Number active for 2 months
 - \$900,000 paid
 - Internet
 - Address
 - Provider
 - Services Billed
 - Enrollment



Use or disclosure of the data contained in this sheet is subject to the restrictions on the title page of this presentation.

Daily Download

/// 20 / OCTOBER 2009 / SGS INTERNAL

**SafeGuard
Services
LLC**

Case 3 - Fraud

- Data Reports
 - Duplicate services
 - Impossible Day
- Calls From Provider Office
- Chiropractor
 - Note
 - Different Practice
 - Strange things
 - Leave the location
 - Electrical burns
 - Treating different locations
 - Office Manager
- Referral to OIG



Use or disclosure of the data contained in this sheet is subject to the restrictions on the title page of this presentation.

Daily Download

/// 21 / OCTOBER 2009 / SGS INTERNAL

**SafeGuard
Services
LLC**

Questions??

SafeGuard Services, LLC
225 Grandview Avenue
Camp Hill, PA 17011
717 975 5899
Sandra.Dorman@eds.com

SafeGuard
Services
LLC

/// 23 / October 2009 / SGS INTERNAL
